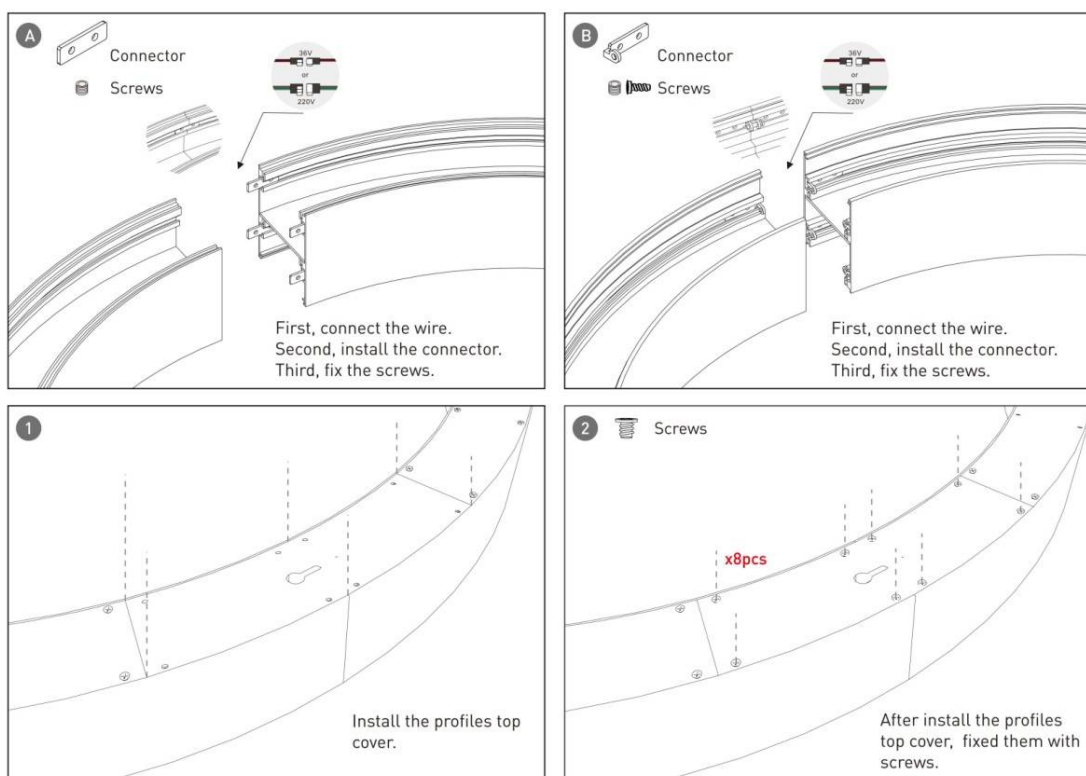
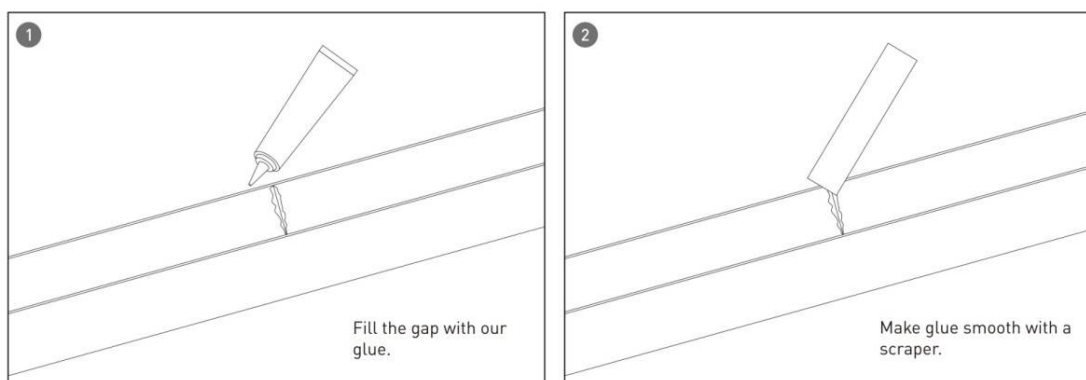


- Installation and wiring of luminaire must be in accordance with all applicable local codes.
- Installation, inspection, and maintenance of luminaires should be performed by a qualified electrician.
- DO NOT make or alter any open holes in the luminaire. Do not modify the luminaire.
- DO NOT install damaged product.
- Make sure electrical power is OFF before and during installation and maintenance.
- Make sure the equipment is properly grounded.
- Make sure the supply voltage is same as the rated fixture voltage.

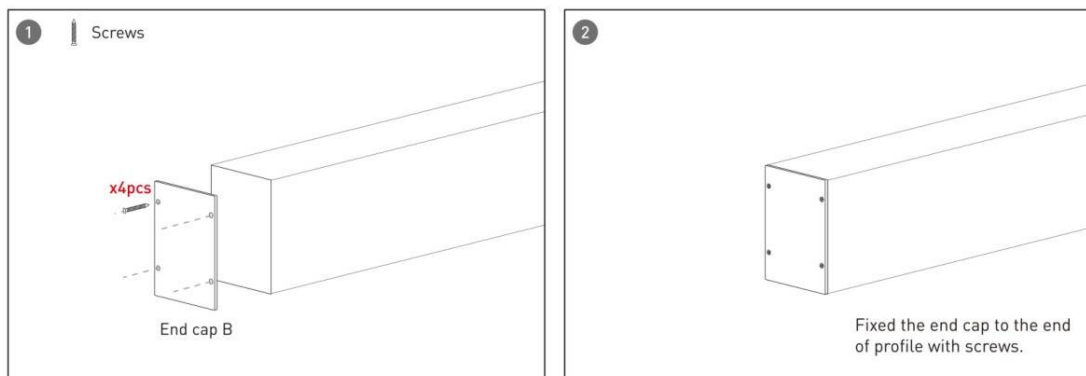
Installation-Profile connection



Installation-Cover



Installation-End cap



Installation-Screws ceiling

1

x Npcs

First, make marks on the ceiling, then dig holes.

2

The lamp top cover.

3a

If the driver is **dimming & external** installation

Connect the wires correctly as above showing.

3b

If the driver is **non-dimming & external** installation

Connect the wires correctly as above showing.

4

Install the lamp with screws.

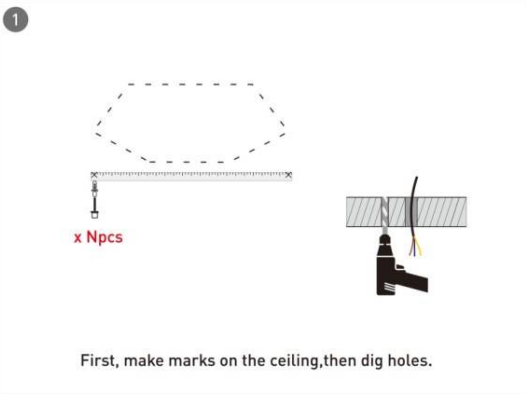
5

Install the cover.

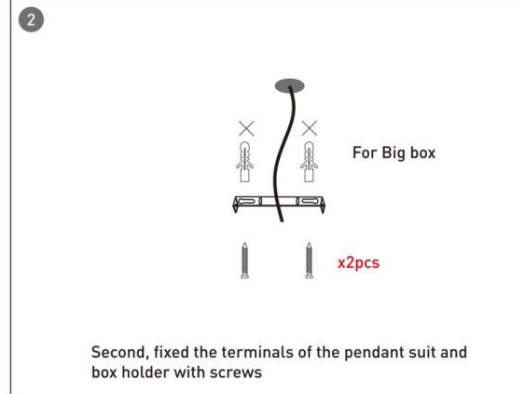
6

Finished.

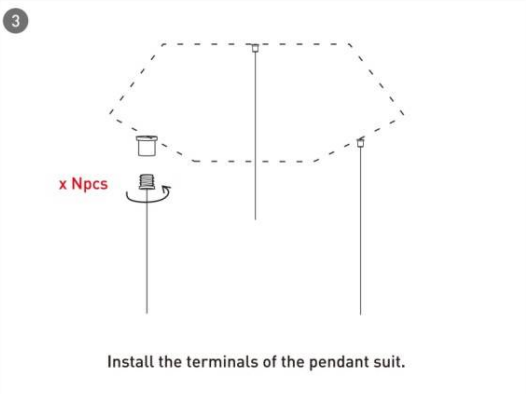
Installation-Pendant with ceiling box

1


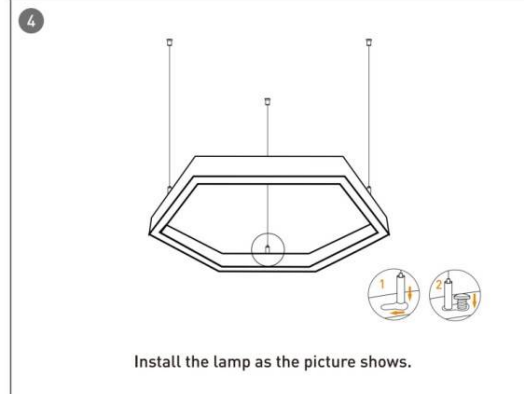
First, make marks on the ceiling, then dig holes.

2


Second, fixed the terminals of the pendant suit and box holder with screws

3


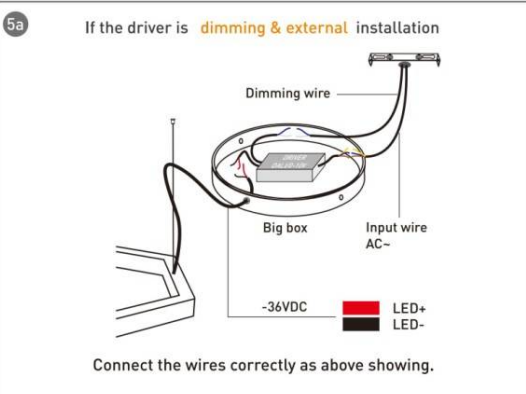
Install the terminals of the pendant suit.

4


Install the lamp as the picture shows.

5a

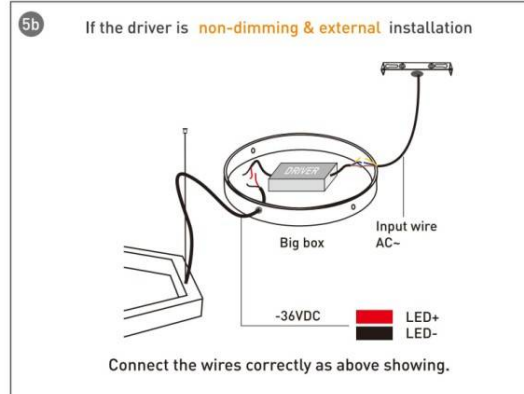
If the driver is **dimming & external** installation



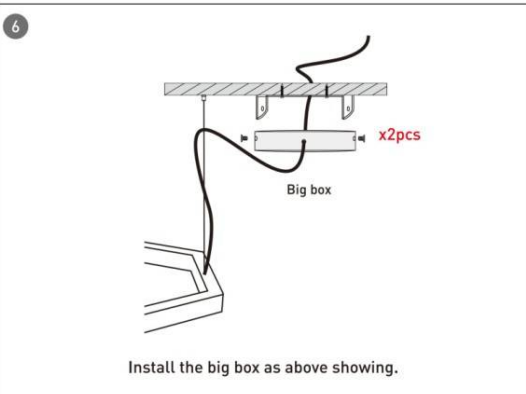
Connect the wires correctly as above showing.

5b

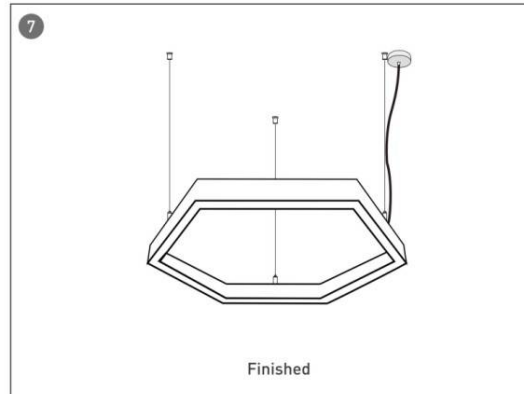
If the driver is **non-dimming & external** installation



Connect the wires correctly as above showing.

6


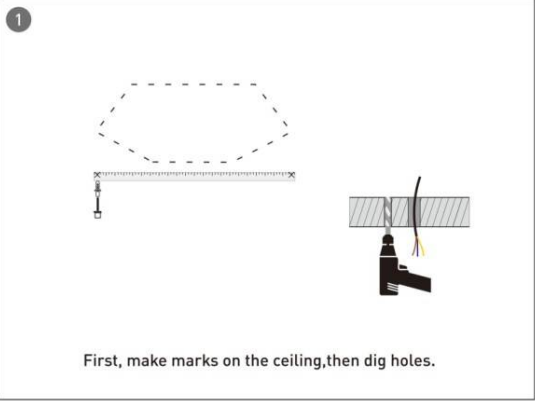
Install the big box as above showing.

7


Finished


Installation-C Clip ceiling

1



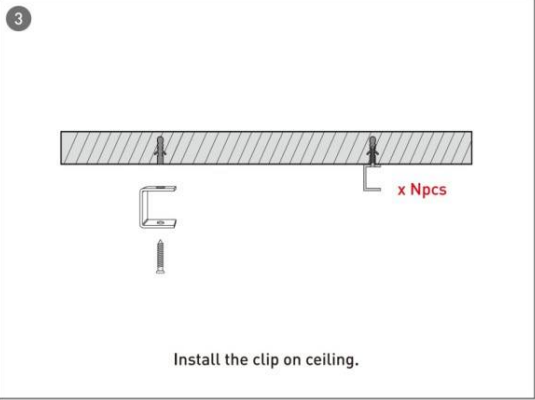
First, make marks on the ceiling, then dig holes.

2



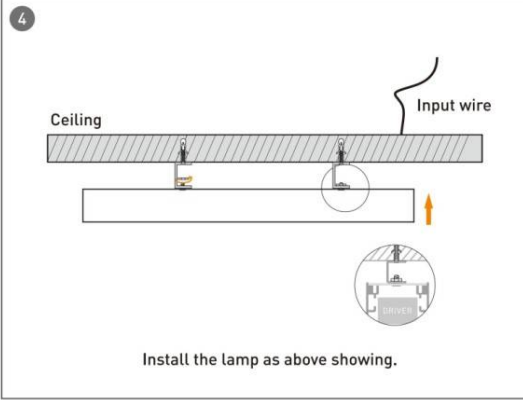
The lamp top cover.

3



Install the clip on ceiling.

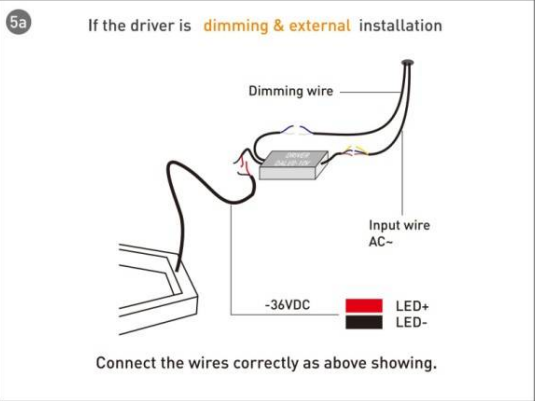
4



Install the lamp as above showing.

5a

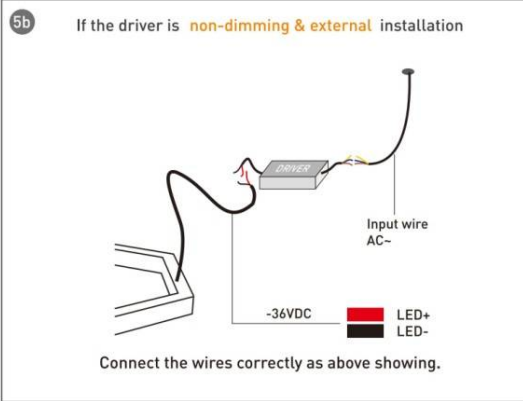
If the driver is **dimming & external** installation



Connect the wires correctly as above showing.

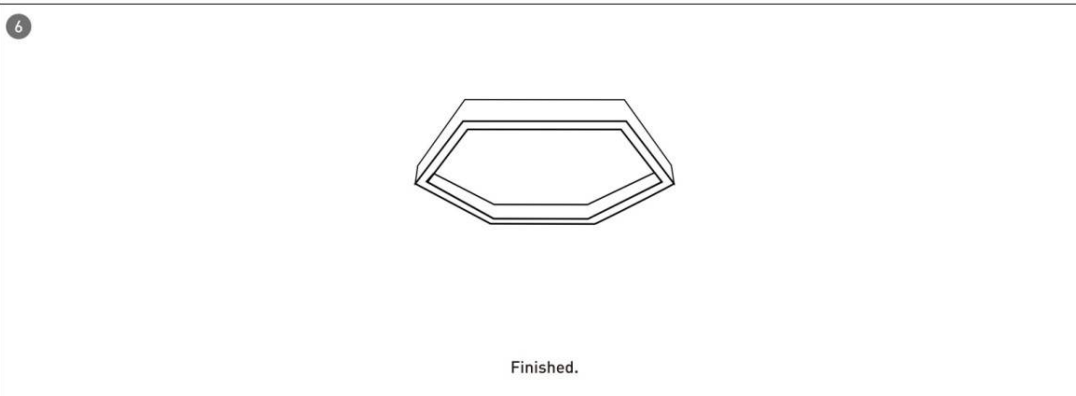
5b

If the driver is **non-dimming & external** installation



Connect the wires correctly as above showing.

6



Finished.